

Witheridge Voice



Summer 2025

Issue 61



Countryside Funerals

A friendly, personal approach to arranging unique funerals

- *Traditional Funerals
- *Affordable, Simple Cremation
- *Green Funerals & Natural Burial
- *Tailor-made pre-payment plans
- *Bereavement Support



31 Park Hill, Tiverton, Tel. 01884 258881



A JOHNSON BUILDING

Renovations, Repairs and Modernisation

Extensions and Roofing

Kitchen and Bathrooms Fitted

Interior & Exterior Decorating

Bespoke projects catered for

References available on request

Call Anthony Home:- 01769 550472

Mob:- 07545 056229



Contents	Page	Editor: Ruth Towers
Editorial	4	Tel 07980104347
Parish Hall	5	ruthandjo9@outlook.com
Ladies Group	6	Treasurer Robin Thomason
Witheridge in Bloom	7	07434032880
Rest a While	8+9	Chairman Carol Prynn
Golf Society	9	Secretary Gill Manning
Film Club	13	Minute Secretary Mike Turner
St John the Baptist Church	15	Proof reading Committee
Little Library	16	Advertising Robin Thomason
Gardening Club	18-20	07434032880
Summer Show	21	advert.treasurer.voice@gmail.com
Parish Council Report	25-27	Website www.witheridgevoice.org
Witheridge Rocks	28	Webmaster
Monday Club	31	witheridgevoicewebmaster@gmail.com
Knights of Witheridge	32+33	Printed by Pharoah Print and Design
Witheridge Methodist Church	35	
Witheridge CofE Academy	36-38	
Mid Devon Messenger	41+42	
Astronomical Society	45	
Police Advocacy	46	
Witheridge Warriors YFC	47+48	
Witheridge Sports Club	49	
Brownies and Guides	51	
District Councillor Update	53-55	
Open Studios– Jenny Nash	59+60	
Badminton, Short mat Balls, Table Tennis	60	
What’s Happening	63	

Advertising in Witheridge Voice

Advertising rates to include the next 4 quarterly issues of the magazine are:

Full page £119

1/2 page £65

1/3 page strip £49

1/6 page box £29

Email:

advert.treasurer.voice@gmail.com

Editorial

Witheridge has certainly been busy over the last few weeks.

St John's Fair was a great success, and the sun shone— which was an added bonus. As I write this, the National British Cycle race hasn't taken place but with nearly 200 cyclists it will certainly be a spectacle; let's hope the inconvenience of limited parking isn't too bad.

Look out for the information from The Sports Club, on page 49, of what's happening there and their opening times.

It's good to see a contribution from the Witheridge Warriors (page 47) and we wish them every success in their forthcoming matches.

We collected a rescue dog at the beginning of March, you may have seen us taking him for a walk. This has meant that we're seeing the village from a different aspect, walking rather than driving, it's then that we noticed how glorious the flowers look. Big thank you to carol Northam and her Witheridge in Bloom team !!

Deadline for articles for the Spring Issue is 4th September.

Please let me have your articles, by email before that date, so I can edit the magazine and have it with the printers in good time.

It is important that this deadline is kept to as we have a very quick turn around with the printers.

This deadline also applies to advertisers, if they need to change any details on their adverts please let us know as soon as possible.

Scarecrow Trail October 2025

Theme—holidays.

Contact Ruth if you'd like to take part.

Parish Hall Update. Exciting Times for the Parish Hall!

We're hoping to give the Parish Hall a much-needed exterior facelift in the near future — it's a very exciting prospect! While nothing is confirmed just yet, we'll share more details as soon as we can.

In the meantime, the **interior is already looking fantastic**. A huge thank you goes to **Alan Thomas**, who completed all the painting single-handedly, and to **Carolina Blinds**, who provided and generously fitted the beautiful new blinds — all on one of the hottest days! The transformation is wonderful, we hope you'll agree.

Please continue to support the Hall.

To keep improving this vital space at the heart of our village, we need your help — whether that's by hiring the hall for a party, attending an event, or even joining the committee.

If you have ideas for events or activities that could take place in the Hall, I'd love to hear from you.

□ spicerclare@gmail.com



KEVIN JONES

Clean Sweep

Chimney and Flue Cleaning

Brush and Vacuum service

Clean Friendly Reliable

Tel: 01884 - 821297 or Mobile: 07773 - 618524

Ladies Group.

A great meeting in April. June and Sue showed us how to paint on glass, using special paint pens and stencils. We all participated and found it a restful pastime. Some very artistic glass wares were produced. A new venture for us.

In May we again welcomed Steven Smith, on this occasion his talk was entitled 'The Headless Carriage!', he regaled us with the legends regarding ghostly headless coachmen driving headless horses. It was also very interesting to hear about the history of transport; from horse driven carriages, steam carriages, steam lorries, canal barges, plus trains, and onwards to the auto mobile with diesel, petrol and electric vehicles.

In June we enjoyed an outing to Tiverton (didn't it pour with rain!). We had an enjoyable lunch at Mrs Gill's in Market Walk, followed by a visit to the Happy Glaze Pottery in Gold Street. We chose an item of pottery and then proceeded to paint it, a very therapeutic occupation. The items will be fired and then collected. We can't wait to see our finished articles!

Our club also has a book club and lunch club. Why not come along to see what we are up to! A warm welcome awaits you.

We meet on the 2nd Tuesday in the month. Parish Hall 2–4 pm.
Except in June, September and December when we meet elsewhere.
Coral Simmonds



Witheridge in Bloom

Hi Everybody,

We have now installed our new raised beds both at Willow Rise and Juniper Way with the help of funding from Alison Homes and The Knights of Witheridge both of which have received our thanks.

Two volunteers have come forward to look after these beds. There must be others who are thinking 'shall I give it a go'. If you can spare a little time and are proud to call Witheridge your home , why not!!!

Contact me.

Carol Northam.

carol.northam1@pobroadband.co.uk

01884 860817





The Rest A While is open Monday to Saturday from 10-12. Come in for a cuppa and a chat and mingle with like minded people. We have had a busy few months, as we are fundraising for our building and renovation fund.

A jumble sale was held in April which raised over £100. Marion and David Crane donated the takings from one of their popular bingo evenings at Thelbridge, on 21st May. This raised £190, so many thanks to them for their donation. We have also received £100 grant from the Knights of Witheridge which will go towards a filing cabinet. Many thanks to them

On the eightieth anniversary of VE day on May 8th, we celebrated in style. The Day Centre was decorated with flags and bunting. Free refreshments were provided including spam sandwiches!! and we played all the old wartime favourites and had a good old sing song. We raised £130 in donations which has been given to the charity Help the Heroes.

The Rest A While is now used for various activities.

The Men's Den takes place fortnightly on the 2nd and 4th Wed. of the month. All the chaps are given a warm welcome by Sean and Peter.

A Bring and Buy stall is held on the last Friday of the month offering seasonal produce and home made goodies.

Every 4th Saturday of the month we host a **live music session** with local musicians from 10-12. Always great fun.

(continued on next page)

A new activity now taking place here on Tuesday afternoons from 4.30pm -5.15pm is **Gentle Chair Pilates**.. The class is taken by Rebecca Cunningham, a very highly qualified, and experienced Pilates teacher. Such good gentle exercise and great fun. If interested please call Pat on 07505255096

If you have 2 hours a fortnight to spare, we are always looking for volunteers to join our happy band of helpers. We are a friendly bunch, so please contact Val tel no 860709 if interested.

Unfortunately on the night of Friday 13th June we had a flood in the Rest A While, which caused significant water damage. We were closed until 30th June to rectify the damage. Thanks to the help of our wonderful committee who organised professional cleaning and repairs, we are now up and running again. We are very sorry for any inconvenience caused by the closure to our regulars and everyone who pops in.

Pat Grant



The South West's trusted mover...

We are setting the standard for removals in Tiverton and Devon by providing a professional, high quality service, while offering great value for money. We work locally and nationally and can offer a full or part pack service to compliment your removal.

Give us a call today to arrange a free no-obligation removal assessment!

📞 01392 956 002

📞 01884 665 000

✉️ info@vanmanexeter.co.uk



Scan this code to watch our movie!



or search YouTube for Van Man Removals

www.vanmanexeter.co.uk

www.vanmantiverton.co.uk

📱 van man removals

Witheridge Golf Society



On May 7th we had a lovely sunny day for the Spring Trophy but sadly said goodbye to a long serving member Norman James who died end of March.

The Spring Trophy was won by Team D: Ken Ramsbotham, Jeff Souch, Peter Smith & Stuart Gedrim
The Wooden Spoon by Team C: Mike Merrigan, Tom Armstrong, Jacky Harvey,.
Nearest to Pin: Stuart Gedrim.

Thanks to Waterbridge Golf Club for a good days golf and a great meal afterwards.

The next meetings is Wednesday 10th September.

NEW MEMBERS WELCOME

Tel: Ken Ramsbotham 01884 861108 Mob: 07702226287

Bell Ringing Practice

Anyone wishing to learn to ring the church bells or previous ringers wishing to ring again, we meet at the church tower 7.30pm

Thursdays. ALL WELCOME

Contact: Ken Ramsbotham Tower Captain

01884 861108 07702226287

**DIANNE
LEACH**
Nail & Beauty

By Appointment Only

Gift Vouchers Available

66 Butts Close,
Witheridge, Tiverton
Tel: 01884 860039 or
07513 497300



**MUD & MOOR
POTTERY**

HANDMADE IN DEVON

Pottery classes in my log cabin
studio in Witheridge
6 week blocks £150
Morning & evening sessions
available

MUDANDMOORPOTTERY@GMAIL.COM
07762270565 - 01884860387



Quality Solicitors
Charlesworth
Nicholl

- Moving home • Agricultural • Commercial • Leases
- Family Matters • Landlord & Tenant • Wills & Probate
- Accountancy & Tax

Contact us on:

01363 774706

www.qualitysolicitors.com/charlesworthnicholl

31 High Street, Crediton, Devon EX17 3AJ

Charlesworth Nicholl is an authorised and regulated firm for Solicitors Regulation Authority no. 101916

**YOUR
LOCAL LEGAL
EXPERTS**

R T Foster Electrical

Fully qualified Electrician
All works undertaken.
Fully insured and guaranteed

Ring Rob 01884 860689 or
07763594910
for free quotation

NAPIT and UKAS registered

Tommy Butcher
Decoration & wallpaper specialist

Over 15 years experience
All aspects of wallpapering and decorating.
Carried out to a high standard
Extremely knowledgeable service provided
throughout your project



www.primarydecorators.co.uk
primarydecorators@gmail.com
07300 405306
01884860387



Just Me Hair & Beauty

07946 487577 / 01884 861514
The Square, Witheridge, Tiverton
EX16 8AE
By appointment only
Gift vouchers available



Family & Friends Celebrations | Boutique
Weddings | Hen & Stag Party | Shoots | Yoga &
Wellness Retreats | Corporate Events
Multi-Award Winning Brasserie

For further information or to book a no obligation meeting contact:
Anita-Clare Field 01884 900 161
email hello@lapetitebouchéebrasserie.co.uk

gth



THE EXPERTS ON YOUR DOORSTEP

From cottages and townhouses to farms,
land and country homes; if you are
looking to sell, develop or
let your property, we can help.

Contact us today for a FREE
market appraisal.

01884 243000 | residential.thverton@gth.net

GREENSLADE TAYLOR HUNT
www.gth.net

Film Club



Dear all Witheridge Film Goers! Thank you for your continued support, although lately numbers have been a bit lower. I hope this is because of the sunny evenings, so consequently we aren't showing films during July and August. If numbers continue to drop I might consider putting films on every other month. Quite a lot of effort goes into showing films, but if I am running at a loss I am reluctant to put that effort in.

We are not showing The Salt Path on September 13th because nobody is quite sure how truthful it is! Instead we are showing The Penguin Lessons starring Steve Coogan who rescues an orphaned penguin.

No film in October, but on November 15th we will be putting on Mr Burton, a biographical drama about Richard Burton starring Toby Jones and Harry Lawtey as Richard.

Dear David has got the chairs from the stage every film night, but feels he is unable to do this any more. Thank you David! I would be grateful if maybe a couple of people could volunteer to do this. It just means coming half an hour earlier to help put the chairs out. Thank you.

So, hopefully see you all on September 13th and thank you again to our stalwarts!

Margie

WITHERIDGE PARISH HALL



What would you like to do in the Parish Hall?

This could be:

Indoor Sport

A Wedding

A Jumble Sale

A Children's Party

A Concert

A Meeting

Or almost anything you would like

£15 an hour

£10 an hour for Children

Charities by negotiation

(All rates including the use of china and cutlery)

To make a booking or for further information, please phone

Steven Smith on 01884 861037

St John the Baptist Church



Summertime Reflections

As the days grow longer and the sun warms both skin and spirit, summertime arrives as a welcome gift. For many, it's a season of rest, reflection, and re connection — with nature and with loved ones.

The fields turn golden, hedgerows buzz with life, and the gentle hum of tractors working under a wide blue sky reminds us of the rhythms of nature — and of the Creator who set them in motion. Gardens bloom in full colour, children's laughter echoes in the parks, and the scent of barbecues and fresh-cut grass fills the air. It's in these simple pleasures that we often feel closest to the beauty of God's creation. Summer invites us to slow down — to sit in the shade of a tree, take long evening walks, or simply enjoy the stillness of a quiet morning.

For our parish, summertime may bring a slight pause in our usual routines, but it also offers new opportunities. Whether it's creating a community picnic, volunteering at a holiday club, or offering a cool drink to a passerby, small acts of kindness shine brightly in the summer sun. Let this season be a time to renew not just our bodies, but our hearts. Why not try saying a prayer on a beach walk, or find God in the whisper of a breeze. As Psalm 74 reminds us, "You have made summer and winter." Each season is a gift, and summer's gift is joy. May this summertime renew our sense of peace and gratitude, and help us see God's hand in every field, flower, and friendly smile. Enjoy the laughter of the season and let us carry the warmth of Christ with us wherever we go

Adrian

The Little Library

It has been lovely to see the library being used by so many members of the village. I try and change the books on a weekly basis, so please pop back if you don't find a book you like the first time.

We currently need books for little people to enjoy (birth to 6). If you have any books that your child/children or grandchildren have grown out of and happy to donate them, please pop them in the box next to the library.

We have had lots of book donations, many thanks, it wouldn't work without your support. Each book is given a sticker and placed either in the library or in storage ready to be put out. It's great to see some books being donated, read and donated again. Please just a quick reminder that we can only take popular fiction and children's books. I hope in the future to apply for grants or fundraise to buy new books for all to enjoy. If anyone can help with this, please let me know.

Sam 861092



J K GARDEN SERVICES

Covering Witheridge and beyond.

Landscaping, fencing, mowing, hedge cutting
and general garden maintenance.

For further information call Jason.

Mobile 07971 292599

Email: jklanscaping@icloud.com

South Coombe Country Cottages

Set in a beautiful location with an indoor swimming pool

South Coombe is the perfect location for a quiet getaway. Its tranquil rural setting and country charm make it an idyllic place to stay. With its indoor swimming pool complex (comprising sauna, gym and games room as well as a 10m x 5m pool), guests can relax and take some healthy exercise inside or out.

South Coombe offers high quality cottages that sleep from two to six people with one cottage having wheelchair access. The cottages are less than a mile away from the pubs and shops in Witheridge village.

South Coombe Farm

Witheridge

Tel: 01884 860302

Email: stay@southcoombe.co.uk

Web site: www.southcoombe.co.uk



Here at East Burrow Farm (5 minutes from Witheridge)



we rear and sell direct our succulent Dexter cross Beef Boxes.

Red Tractor Assured, NDDC Inspected 5* rating and low food miles, you will not taste better.

Fresh Beef is available every month through the year, we can suit any size budgets...but our most popular boxes are :

Small family Box, typically just under 3.5 kgs, Roasting joint, 2 x lean mince packs,

2 x dice beef, one pack of 2 steaks.£40

Medium Box, approx. 7.5 kgs, a larger selection of the above£85

Please follow us on fb... [eastburrowbeefandlamb](https://www.facebook.com/eastburrowbeefandlamb), or call **07510317525**

Email kathrine971@btinternet.com

Witheridge and District Garden Club

David Usher came to talk to us in April about the Care and Maintenance of Shrubs. David was Head Gardener at Hestercombe Gardens for over 20 years and gave us an informative and amusing talk. He brought with him a selection of tools and an assortment of cut branches to demonstrate how to cut and prune them properly.

When planting a new tree, always dig the hole big enough for the roots to be spread out and deep enough so the soil comes up to where the tree was planted in its container, make sure there are no rocks or large pebbles at the bottom of the hole, and if planting in winter add some bonemeal and some root feed. If at any other time of the year then Gromore plus root feed will be sufficient. It's a good idea to water the hole before planting the tree, as well as watering it in once planted. David's recommendation was to buy the best tools you can afford and make sure they are sharp, particularly secateurs and shears. A tree saw is a useful tool to have especially when it comes to removing dead or old wood right at the base.

At our May meeting, Dr. Cathy Horsely, who is the Wilder Communities Officer at Devon Wildlife Trust, gave us a very interesting and informative talk on how to get our gardens wildlife friendly. Cathy is an ecologist and worked at the Bumblebee Conservation Trust before joining the Devon Wildlife Trust. Their aim is to bring back wildlife which has worryingly declined since the 1970's – so far, they have had success with Beavers and Pine Martens. If all the gardens in Britain were put together, they would cover an area bigger than 6 Nature reserves.

The main points to consider in helping pollinators are food, water and shelter. Food comes from flowering plants providing pollen and nectar. In Spring when insects are coming out of hibernation, they need to feed and blossom is an important resource for them, daffodils also provide a rich supply of food. You can find out more about plants for gardens by contacting www.wildaboutgardens.org.uk - loads of information and leaflets available.

Another site is wildercommunities@devonwildlifetrust.org

Garden Club outing to The Garden House, June 2025

Saturday June 7th saw a group of Garden Club members board the coach for a trip to The Garden House in Yelverton. The weather was fine on the way down, but just before we arrived it started to rain and continued to pour down for the rest of our visit, such a shame as the Gardens looked lovely. We moved from shelter to shelter, but in the end we gave up and went into the Café for very welcome hot drinks and food. I did try some photography and managed to get a few shots, but they certainly did not do justice to the many beautiful and varied plants.



These two are what we managed to see through the rain.



This is what we should have seen!!!



(continued on next page)

After lunch, we got back onto the coach and travelled about 2 miles to Wildside Nursery, run by Keith and Ros Wiley – Keith was a former Head Gardener at The Garden House. Those brave enough to tackle the elements again went into the Nursery.

At our June meeting, we had a return visit from Saul Walker who told us about his time as Manager of the S Chelsea Flower Show. RHS Chelsea Flower Show, Saul is currently Head Gardener at Stonelands House in Dawlish – and the Garden Club are planning to visit there next year.

He became the Show Manager in 2014. There is an 18 month planning cycle for the Show, which includes a number of planning meetings with the various gardeners to ensure they are meeting the brief, have the funding available – for example a “Best in Show” garden can cost up to one million pounds! The minimum cost for a Show garden is £250,000. There is a 6 week build in the run-up to the Show; the Show itself is on for a week and the exhibitors are then only allowed one week to dismantle their gardens. Most of the gardens are relocated elsewhere.

The Flower Show started over 100 years ago and was originally known as The Great Spring Show held at Kensington for twenty-six years but in 1888 the RHS decided to move the show to the Temple Gardens in the heart of London. It was then moved to the grounds of the Royal Hospital in Chelsea for a one-off event. It proved such a good site for an exhibition that the Great Spring Show was moved there in 1913, where it has been ever since.

Programme for the rest of the year:

Wednesday 20th July Witheridge in Bloom. John and Carol Northam

Saturday 2nd August Summer Show

Wednesday 24th September Rosemoor. Jon Webster

Wednesday 29th October Bees and Bee Keeping. Tiverton Bee Keepers

Wednesday 16th November AGM, followed by a Quiz and Social Evening.

Jill Horwood

Witheridge Garden Club Summer Show

Parish Hall Witheridge
Saturday 2nd August
2.30pm

Presentation of awards 3.30pm
All classes free to enter
and open to everyone



Shedules available from 1st July from
Witheridgegc@gmail.com
and from Two Moors store.





Introducing Benson Grange

New 2, 3, 4 & 5 bedroom
Shared Ownership homes in Witheridge



Benson Grange Shared Ownership homes offer a range of designs and sizes finished to a high specification and include turfed gardens. Homes are energy efficient, built with sustainability in mind and include Air Source Heat Pumps.



Community Funding

We are proud to be contributing £15,500 to help support community projects in Witheridge. Visit our website to find out how to apply.

 [benson-grange.co.uk](https://www.benson-grange.co.uk)

To register your interest or to find out more about
these Shared Ownership homes call 01884 510 253

REGISTER
HERE



T&Cs apply. Subject to status and eligibility criteria. Min and max share values apply and rent is payable on the unsold share. Homes will be prioritised to those with a local living or working connection to Witheridge. Interior images are CGI dressed representations taken in actual homes at Benson Grange, July 2025.

THE MOUNT PLEASANT INN

Nomansland EX16 8NN



Family run pub since 1986.
Open for food & drinks
Tuesday to Sunday from 12 noon.
For all information on closing
times & menus go to our web site
www.themountpleasantinn.com
Take away service still available.

To make a booking
please call
01884 860271





Andrew Symons LTD

GROUND CARE & GARDEN MACHINERY



Offering repairs, servicing and sales
of all leading renowned brands.

- Lawnmowers
- Hedge Cutters
- Chainsaws
- Leaf Blowers
- Strimmers
- Ride-on's

Plus So Much More

South Molton

Borners Bridge,
Near Pathfields Industrial Estate,
South Molton, EX36 3LZ

01769 574455

www.andrewsymons.co.uk



Painful Feet?

Viv Pulford
Foot Health Practitioner

Diploma in Foot Health,
and BSC in Adult Nursing
Tel 07827 779559

- Nail Cutting and filing
- Deal With Fungal Infections/ Thickened Nails
- Corn Callus Removal
- Discounts for 2 or more people in same house

For treatment in the comfort of your own home

Electrician

www.twomoorselectrical.co.uk

- ✓ Fully Qualified, Insured and Registered
- ✓ References Available
- ✓ Reliable and Friendly Service
- ✓ Flexible Hours
- ✓ Satisfaction Guaranteed
- ✓ Proud to be Local
- ♦ Extra Lights and Sockets
- ♦ New Fuseboards
- ♦ Rewires
- ♦ New installation
- ♦ Smoke Alarms
- ♦ Experts on Rewires
- ♦ Extensions
- ♦ Electric Heating
- ♦ Ventilation
- ♦ Garden Lighting
- ♦ Kitchens
- ♦ Bathrooms

No job is too Small Call James on

01884 688 138



TRUS
Governme



Parish council Report Summer 2025

I begin with an update on my annual report. The bow top railings have now been erected around the tots playground in the parish hall, a huge improvement to the old post and wire I think you will agree, and apart from a few snagging problems, which are being attended to by the contractor they are functioning well. These were funded by the 106 money from the developers of Willow rise. A replacement Springer "Betty Bee" has been newly installed and once the safer surfacing has hardened will be ready for the tots to play on. I would ask that bicycles are not be taken into the playground and ridden over the tots' adventure area. One child was injured last Saturday doing just that so please leave your bikes outside of the play park and let the young tots enjoy their play.

Your Parish council are one step closer to obtaining the Northern Open space at Willow Rise. Alison Homes have agreed to pay our solicitor costs and have covered the old sales office parking area with soil and seeded it. However the council will monitor the soil grading as it does contain lots of large stones and old broken bricks which need to be removed.

The bus shelter at Lakelands has finally been upgraded to make it now weatherproof.

The contractor has now commenced the renewal of the Parish toilet block roof. Scaffolding was erected on the 3rd July and the work will take approximately three weeks weather permitting. I apologise for the parking area that has to be used but it will only be of short duration.

Another apology to the children that the skate ramps at the adventure playground have not yet been removed for repair. We were promised that they would be taken in the next two weeks about six weeks ago!! However will try to expedite it ASAP.

(continued on next page)

Nothing yet scheduled by county highways for the requested repairs to the B3137 through and out of Nomansland to Cruys Morchard also the back route to the Link Road along Farm Flowers hill. Subsidence is becoming a huge problem along the smaller lanes as the tractors become larger, heavier and wider breaking up the sides of the road thereby causing sunken sides with a prominent ridge on which the tarmac splits open and smaller vehicles are in danger of grounding. Please keep reporting the above and damaging potholes to the county highways via the parish council website.

Our new county council representative Mr Richard Hopley although not present at our July meeting emailed that he has requested a speed limit of 20mph to be enforced through the narrow part of Fore Street. Also there was representation by parishioners concerned with the speed of tractors along Church Street and vehicles passing the parish hall entrance in north Street endangering children who may be leaving from the playground. The Parish council will seek advice from highways/police on participating in the 20s plenty campaign and the erecting of local highways signage.

Mr Hopley also stated that the railings across the Bow, the passageway that leads from Fore Street to the Parish Hall, will be reduced to just one section to allow access for mobility scooters. This will alleviate the need for them to negotiate the narrows to give them access to the square. The parish council have been asking for this for nearly four years so let's hope now the work will be finally completed. The residents alongside the new Zebra Crossing lights in Fore Street suffering from the light pollution will be pleased to know that County will be installing light shields.

Councillor Mr Fox held a meeting in the Parish hall in May with the exiting idea of creating a community orchard on the strip of green land at Cannington Road .A green space that we could all use; all could nurture and benefit the whole community. To make it happen we were looking for a core group of local people who were willing to be part of a team of volunteers to take this forward. Using the land as a community

space with the fruit trees and picnic benches was necessary to secure funding for the project. It was a very successful and enthusiastic meeting resulting in at least twenty people leaving their contact details to enable the project to get off the ground. Disappointingly however the land was sold by Stags before our funding was secured from North Devon council. Our District councillor Mr. Jones has however identified a possible new site in the village that could become our new community space and is working on it becoming a reality.

I am sure you are all aware that not only has the church clock been rather sporadic at retaining the correct time but the quarter and strike have also failed. These automatic winding units are 23 years old and are now obsolete. The engineer's recommendation is that the two 240v epicyclic automatic winding units, quarter and strike, be manufactured in their workshops together with barrel sprockets and installed above the clock movement. The automatic winding units do come with a ten year guarantee. The Parish council agreed to accept Cumbria Clocks quotation at our July meeting and hope that the engineer can carry out the repairs soon.

The Parish council have an interregnum in August, however necessary and urgent items will be delegated to the chairman, vice chair and the clerk.

I hope you all have a good summer, the weather is certainly playing ball at the moment, let it stay for the school holidays please!

Jacky Harvey chairman Witheridge parish council

Witheridge Rocks

This term the Year 6 & 7's have been meeting on the 2nd Thursday of the month, and the Year 8's upwards on the 4th Thursday of the month.

Whilst some may be disappointed that they cannot come to youth club more often, I think you will agree that the atmosphere at both sessions is now much calmer. We will make our decision about the future during the Summer holidays and let you know via Facebook and/or email.

Our new pool table is getting lots of use, and our craft activities continue to be popular.

Recently you may have heard the Year 6 & 7's having a go at bell ringing. They all behaved well and learnt a lot. Who knows, maybe we will have some regular junior bell-ringers as a result. Our young people only rang the smallest bell. From the picture of the weights of the bells I'm sure you can see why.

A big thank you to the Knights of Witheridge for their donation which has enabled us to purchase lots of storage boxes, to keep our equipment dry and organised in the shed.



East Worlington Primary School, for children aged 2-11 years, is in the village of East Worlington, very close to Witheridge.

A small, warm & welcoming school with incredible outdoor facilities!!

- **Nursery Class** - registered for funded childcare
- **Out of School Club**
- Part of the high performing Chulmleigh Academy Trust, enabling seamless transition & **priority admission** to secondary school at Chulmleigh College.



www.east-worlington-primary.devon.sch.uk
admin@east-worlington-primary.devon.sch.uk
t: 01884 860722



ASAP
PLUMBING

Call Steve on:

01884 860960

- **WOOD BURNER INSTALLATION**
- **OIL BOILER INSTALLATION + SERVICING**
- **OIL TANK INSTALLATION**
- **ALL GENERAL PLUMBING NEEDS**





THE MITRE INN



PROPER FOOD, REAL ALE &
A FRIENDLY ATMOSPHERE



BREAKFAST, LUNCH & DINNER

Our ethos is to provide quality seasonal meals made with locally sourced ingredients.

If it'll fit in a box, we can have it ready to takeaway!

REAL ALES, CIDERS & LAGERS

Varieties from across the world to as close as down the road. A pint of the good stuff not your thing? Come and check out our gin corner & cocktail menu!



BED & BREAKFAST

We have five rooms suitable for families, to people travelling with dogs. So if you ever have friends or family coming to stay, but just not enough room at home, why not book them a room?

Cooked breakfast included!



TEL - 01884 861263

EMAIL - THE.MITREINN@MAIL.COM

Monday Club

The Monday Club is for over 60s and meets in the Rest A While. We have a variety of speakers and arrange coach day trips. Recent days out have been to Tavistock and Dartmouth, both were thoroughly enjoyable days.

Trips are advertised with posters around the village and on <https://www.facebook.com/groups/218235022064167> <https://www.witheridgevoice.org/what-s-on>, <http://nextdoor.co.uk>

Upcoming trips leaving from the Witheridge Square at 9am are:

11th August Buckfast Abbey & Newton Abbot

15th September Padstow

13th October Truro

Non-members are welcome to join us and do not need to be over 60! Anyone that would like to book a place on the trips, please call Sheila on 01884 860227



engineering

Oil Heating and Oil Cookers

AB Engineering Oil-Fired Specialists

Servicing and Repair, Boiler Installation, Power Flushing

AGA - Rayburn - Stanley - Grant - Worcester - Boulter - Trianco - Firebird
and more.

Tel: 01769 732032

www.abengineering.biz

Knights of Witheridge

The purpose of the Knights is to raise funds to support clubs and organisations in Witheridge and the surrounding area.

In the past year, the fortnightly Knights' Quizzes and Raffle have raised over

£1300 and our Charity Shoot, courtesy of Eastway Farm, raised a further £1200. We also received a generous grant of £1500 from Allison Homes to fund the activities of the Knights.

In the last article of the Voice, and in the Village Facebook pages, we asked local groups to bid for support from the Knights. We had a fantastic response and received eleven applications (one of which was subsequently withdrawn). As a result, I am happy to report that, at the Annual General Meeting in May, the Knights were able to make the following grants:

Nomansland Cricket Club £200 towards the replacement of their batting nets

Rest A While Day Centre £100 towards the purchase of filing cabinets.

Witheridge In Bloom £200 for new flower troughs for Willow Heights.

Witheridge Rocks Youth Club £200 for storage units.

Witheridge Voice £400 to help offset the increased printing costs of this magazine.

Witheridge Parish Hall £260 to pay for the entertainer at the 2025 Children's Christmas Party.

Witheridge Academy PTFA £300 towards the costs of a Colour Run & Summer Fayre

St John's Fair £300 to sponsor a children's entertainer.

Thelbridge Parish Hall £500 as a contribution to the restoration fund.

Witheridge Sports Club £500 towards the cost of music and a children's entertainer at a Summer event.



Some of these grants have already been distributed and the remainder will be given once the event is confirmed. In addition, we have been able to lend some of our fund-raising equipment to other organisations to help them in their own fund raising. None of this would be possible without the generous support of the people of Witheridge and the surrounding area, who come to our events or raise funds for us. On behalf of the Knights, I would like to say thank you everyone for your generosity. If you want to help us raise more funds, please come along to one of our events such as the fortnightly quiz in the Sports Club. The dates for the next quizzes are:

6 & 20 August,

3 & 17 September

1, 15 & 29 October

Finally, if you would like to join the Knights and help us to raise funds for local good causes, please call the telephone number in the back page of the Voice. The more of us there are, the more fund raising we can do.



An academy with ambition, open to 11-16 year olds, offering a traditional and enriching education, with results consistently amongst the best in the region. In 2022 we were the top performing academy in Devon. Every day is an Open Day, please contact us to arrange a personal tour.

Chulmleigh College

'Nothing but our best'

t: 01769 580215 w: www.chulmleigh.devon.sch.uk e: admin@chulmleigh.devon.sch.uk



Compassion
Ambition
Teamwork



FS Friendship & Sons

Funeral Directors

For the personal touched that matter

We are a family run business providing professional and caring services to families in Witheridge and surrounding villages from our offices in South Molton and Dulverton.

- Offering Traditional and Bespoke funerals
 - Direct Cremation for £1195.00
 - Golden Charter Funeral Plans
 - Private Chapel of Rest
 - Home visiting service

For Professional advice and Guidance please contact

Tel: 01884 508535(24 Hours)
www.friendshipandsons.co.uk



Witheridge Methodist Church



In the Christian church the Day of Pentecost was celebrated, this year, on June 8th and is often thought of as the birth of the church. For many churches this is seen as a time of growth and development.

At the Methodist church we continue to work on reaching out into the community, this isn't always easy as there aren't many of us. We've recently had to cancel our coffee morning, at the beginning of July, and then our community lunch in August. We do apologise for this as we know how both events are appreciated but, in each case we didn't have enough people to make it possible.

With **Christians in Witheridge** we try to plan special services and events that are aimed more at people who don't regularly go to church, or are happy to worship in a different way.

The next events are

Café church at the Parish Hall on Sunday 31st August at 4.30pm. This will be a short, family friendly, act of worship with tea and cake. Do join us if you can.

Then on Sunday 5th October we have our next Cider and Sing. If you saw any of the Glastonbury coverage of 'Assembly Bangers' it's a little bit like that. A chance to sing some well known hymns, listen to a short talk, buy a pasty and cider (other drinks are available) before singing a few more hymns. This will be the 3rd one of these we've held, and have been very enjoyable.

Next events. Aug 2nd, Sept 6th and October 4th Coffee morning and Jigsaw library, 10am-1pm.

Community lunch Sept 3rd and October 1st. Please book a place with Ruth 07980104347 or Carol 07901377411

Witheridge C of E Academy Primary School: Summer Term Highlights

As the summer term draws to a close, Witheridge Primary School has once again been a hub of learning, enrichment, and community activity. From academic milestones to memorable trips and events, the past few weeks have provided plenty to celebrate.

Academic Success

This term saw the release of Year 6 SATs results, and Witheridge pupils achieved an impressive combined score of **88% in Reading, Writing, and Maths**. This places the school at the top of the TEAM Multi-Academy Trust and significantly above both county and national averages.

Staff attribute these results to consistent, high-quality teaching from Early Years through to Year 6, as well as the dedication of pupils and support from families. Individual results have now been shared with Year 6 families alongside end-of-year reports.

Sports and Activities

Pupils took part in a wide range of sporting events this term. Highlights included:



- **KS2 Football Tournament** – Witheridge boys' team placed first, while the girls' team gave a strong performance and showed great teamwork.
 - **Sports Day** – Held in warm weather and supported by parents and carers, the event was a great success.
- Netball and Cricket Tournaments** – Class 4 pupils represented the school with enthusiasm and team spirit.



Younger pupils also enjoyed their FSU Sports Day, with older children stepping in as leaders and helpers to support the morning's activities.

Enrichment and Learning Beyond the Classroom

Enrichment has continued to play a key role at Witheridge this term:

- **Spirited Arts Week** gave pupils the opportunity to express their ideas creatively through art.
- **Class 4's DT Day at Blundells** provided hands-on experience in design and technology.

Beach visits and museum trips offered valuable real-world learning experiences.

Wildside Residential is taking place for Class 3 pupils, offering outdoor education and team-building.

These activities are part of the school's ongoing effort to provide a broad and engaging curriculum.

Transitions and Staffing

Transition arrangements have been underway to prepare pupils for the next academic year. Children spent time in their new classes during a whole-school Transition Day, and feedback from pupils and staff was very positive.

Staff also met for a handover session to ensure a smooth start in September. Parents will be invited to “Meet the Teacher” sessions at the beginning of the autumn term.

Staffing for 2025–2026 has been confirmed, with Miss Coles joining Class 1. The school also bids farewell to Mr Booth, who is moving on to a role in a specialist SEND provision. He leaves with thanks for his contribution and best wishes for the future.

Community and Events

The school has continued to engage with the local community. Highlights included:

- **St John’s Fair** – Pupils participated in the village parade and performed at the Village Hall.
- **Church Coffee Morning** – A well-attended event supported by parents and hosted by the local church.
- **Reception Starters Evening** – Welcoming new families to the school for September 2025.

Looking Ahead

As the term ends, the school is preparing for:

- **Class 4 Performance and Rocksteady Concert**
- **FSU Graduation**
- **Year 6 Leavers’ Service at the Church**

End-of-Year Awards Ceremony

Thank You

The school would like to thank parents, carers, and the wider community for their ongoing support this year. It has been a busy and rewarding term, and staff look forward to welcoming pupils back in September for another successful year of learning and growth.

Kind regards,

Miss Ratcliffe

Head of School

Witheridge C of E Academy

Part of TEAM Academy Trust

01884 860518

<https://www.witheridge.devon.sch.uk/>



Witheridge Parish Council Council Information



Council & Committee Meetings

Meetings are usually held monthly on the first Thursday with additional meetings scheduled as required, see www.witheridgepc.org for full schedule and any changes.

Agendas detailing venue and start time are published at least three days in advance on noticeboards located in the Square & Drayford Green, and on the council website together with minutes of meetings. Minutes of proceedings of a council and of its committees must be kept. They are intended to be formal records of official acts and decisions, not reports, still less verbatim reports of speeches.

Planning applications received after agenda publication will be dealt with owing to a 21 day limit on the council responding to consultations from the Planning Authority. The parish council is only a consultee, and does not determine applications.

Residents can make representations in writing to the clerk or in person during the public session held at the start of a meeting. Please note in accordance with Council Standing Order 3(h) a question shall not give rise to a debate or require an immediate response

Contacting the Council :- Tele : 07922 926017

Email : parishclerk@witheridgepc.org

Website: www.witheridgepc.org

Chair : Cllr J Harvey Tel: 07751 974412

Parish Councillors are listed in the Register of Interests on the website.

Contact Details for the District & County Councils services and councillors can all be accessed via the parish council website **Council Contact / General Info.** page.

Links to report Highways issues (potholes, block drains etc), issues with overgrown trees are also available including "A-Z" links to other services.



Witheridge Newsagents t/a Two Moors Store

16a The Square, Witheridge

New opening hours:

Monday – Thursday 6.00am - 6.00pm

Friday and Saturday 6.00am - 7.00pm

Sunday 6.00am - 1.00 pm

A little known fact is that we have been delivering groceries throughout this year and intend to continue this service. We also accept payment by debit card over the phone making life easier we hope. If you've not been in to see the range recently please come on in and have a nose. Tel: **01884 860815**

When you need advice we have the solution

- Agricultural Law
- Business Sales & Purchases
- Buying & Selling Property
- Commercial Litigation
- Estate Administration
- Employment Law
- Family Law
- Residential Conveyancing
- Landlord & Tenant
- Land Sales & Purchases
- Later Life Planning
- Wills, Trusts & Tax
and more

Call our Crediton office **01363 77 55 66**

Manor Office, North Street, Crediton EX17 2BR

Other offices at Exeter, Okehampton, Budleigh Salterton,
Ottery St Mary and Sidmouth.

Visit **gilbertstephens.co.uk** for more information

Gilbert Stephens LLP is authorised and regulated by the Solicitors Regulation Authority (no: 536070)

ANOTHER YEAR OF PROGRESS FOR THE MID-DEVON MESSENGER

The local charity of many years standing, Mid Devon Messenger (MDM), held its 43rd Annual General Meeting at the Mid Devon Indoor Bowls Centre recently when its Chair, Helen McIntosh reported another year of progress. Around 70 listeners, volunteers and guests attended.

MDM originated as a talking newspaper for the visual impaired and while it continues to benefit those affected, it is now available to people who are print disabled by other medical reasons such as stroke, Parkinson's Disease, Motor Neurone Disease, rheumatoid arthritis, dyslexia and the early stages of dementia.

Free access is by mail, email, online or smartphone and a volunteer visitor with a technician is available to meet with potential listeners in their own homes. There are also now social groups that meet regularly each month including indoor bowling, macular support, a walking group, a book club and friendship groups.

Helen said she had been thrilled with the feedback received from listeners but she emphasised that issuing the weekly editions of the MDM newsletter could not be done without a tremendous input from the many volunteers - reading the local news, recording and producing the editions and getting them out to around 100 beneficiaries. "I'm always in awe of our volunteers and their commitment to MDM" said Helen and that included those organising the "tea and cakes" occasional get-togethers of listeners and volunteers and the appetising refreshments at the AGM. Sue Herniman is due special mention as Volunteer Co-ordinator. Specific mention was made of Yvonne and Nigel Tupman, who have visited all new listeners and fixed their technical glitches where necessary while Jenny David has successfully renewed our Facebook page. MDM has benefitted from Carol Brown's long involvement as Listener's Representative and from Rod Sparkes as long time Lead Producer.

(continued on next page)

Helen was delighted to announce that MDM is a finalist in the BBC Radio Devon “Making a Difference” project. Listen in for the result! Treasurer Rose Chanin reported a healthy financial situation following a legacy of £2500 and further donations totalling £1300 from the Antediluvian Order of the Buffaloes plus £300 from Tiverton Town Council. However all donations large and small are very much welcomed.

As to the Officers, there were no changes for Chairman, Treasurer and Secretary (Mike Kelly).

Attendees were entertained by local musical group. “In Harmony” comprising the trio of Kathy Welden, Lyn Taylor and Lynne Guest who sang songs popular in the sixties and seventies much to the delight of their audience. They were warmly thanked by Helen as Chair. The whole event was very enjoyable as all those involved with MDM had the opportunity to spend time with each other and, in some cases, meet for the first time either as listeners or volunteers.

For more information about MDM go to <https://middevonmessenger.org.uk/> or look up the MDM Facebook page “Mid Devon Messenger”

Photo by Nigel Tupman



WEST COUNTRY PICTURES



Rull Farmhouse
East Worlington
Tel - 01884 860978
Email brook@rullfarm.fsnet.co.uk

*Picture Framing Service Available Locally
Please telephone for an appointment
Local collection and delivery can be arranged*



Simon Underwood
stonehouse electrical services
13 the square, witheridge
call 01884 860713
or text 07790251131

All kinds of electrical problems fixed



WITHERIDGE TENNIS CLUB

Welcomes new members of all ages and abilities

Non-members may use the court at a cost of £2.50 per person per hour

Bookings can be made through the Newsagent in the Square on 01884 860815

For more information, contact:
Sarah Vertigan on 01884 860844
www.witheridgetennisclub.com

D. CHAPPLE

Joinery
Est. 1983
**HARDWOOD WINDOWS
& DOORS**

UNITS 1,2 & 3
TOLL GATE COURT
MARKET FIELD IND. EST.
WITHERIDGE

Tel/Fax 01884 861221

Orchard End Kennels & Cattery



Providing award winning, friendly and professional care for dogs, cats and small animals.



- 5 Acres of exercise fields • Fully heated • Onsite grooming salon
- Accommodation for all types of small animals
- Collection & Delivery service available

Tel: 01363 877375 Email: orchardend@hotmail.co.uk
Address: Orchard End Kennels, Black Dog, Crediton, Devon
EX17 4QL
www.orchardendkennels.co.uk

Newhouse Farm Cottages

quality self-catering accommodation in Devon's Heartland
open all year for long or short breaks

We have nine beautifully converted Grade II listed stone barns sleeping in total 47 people with a choice of accommodation ranging from one to five bedrooms



Our facilities include heated indoor swimming pool with counter current jets, traditional sauna, function room, barbecue lodge, indoor games room and outdoor children's play areas set in 30 acres of flower-filled meadows

NEW AND AVAILABLE FOR PRIVATE HIRE

Scandinavian Barbecue Lodge - barbeque no matter what the Devon weather has in store!



Newhouse Farm Cottages, Witheridge, Tiverton, Devon EX16 8QB
Tel: 01884 860266 Email: info@newhousecottages.com
or visit our website at www.newhousecottages.com

WITHERIDGE ASTRONOMICAL SOCIETY

We start off with some night-time fireworks – meteor showers. The Alpha Capricornids are yellow slow fireballs active until the 15th August, the Delta Aquariids are active until the 23rd August, and the Perseids can be seen peaking on the 12th August with many bright fast meteors with trains and associated with Comet Swift-Tuttle. Also, this month look for the Milky Way as it meanders through Cygnus. Sweeping along the Milky Way with binoculars will reveal a treasure trove of stars, far too many to count.

September provides us with a good opportunity to observe Neptune, the furthest planet in the Solar System. On the 22nd it will be at its closest, but a telescope will be needed to see the planet at mag.+7.7, located 2.5° to the left of Saturn. Also look out for a total lunar eclipse on the 7th. The Moon rises just as totality is ending (7.53pm) with the eclipse ending at 8.56pm.

October provides us with more meteor showers. The Draconids on the 8th Associated with Comet 21/P Giacobini-Zimmer, and the Orionids on the 22nd but visible for most of the month and associated with Comet Halley.

With the onset of autumn, we have a good opportunity to see our nearest giant neighbour, M31 the Andromeda Galaxy. It is 2.5 million light years away from us, which means that when we look at the M31 we see it as it was 2.5 million years ago. It is a spiral galaxy much like our own and has twice as many stars as our own galaxy, but the total mass is about the same. M31 is approaching us on course for a cosmic collision, the outer fringes of the two galaxies are already touching. The main merger will happen in about 4 billion years' time.

On the 26th October British Summer Time ends, and the clocks change by going back one hour.

The Witheridge Astronomical Society meets monthly at 7.30pm on the third Thursday in the Committee Room of Witheridge Parish Hall. We are not a 'highbrow' society, our aim being to introduce people to the hobby/ science/ wonders of the night sky. If you have an interest do come along and join us. No experience or knowledge is needed. We have kindly been given some telescopes which are available to borrow.

Steven Smith

Police Advocacy Surgery - dates and times

The surgery is held in the Witheridge Parish Hall Committee Room. The door will be wide open unless it is pouring down. Do feel able to call in. An Amnesty Box will be present should you wish to dispose of knives, etc.

Monday August 4th from 6pm to 7pm

Thursday August 14th from 11am to 12 noon

Thursday August 28th from 11am to 12 noon

Monday September 1st from 6pm to 7pm

Thursday September 11th from 11am to 12 noon

Thursday September 25th from 11am to 12 noon

Monday October 6th from 6pm to 7pm

Thursday October 9th 14th from 11am to 12 noon

Thursday October 23rd from 11am to 12 noon

Have you been a victim of crime, seen something and wish to report it, or any other police related matter, please feel able to come along to a surgery to talk to me about your concerns. I act as a 'middle man' between the public and the police. If your issue is of an urgent nature ring 999 immediately. Many had the opportunity to listen to the talk on Cyber Crime by Mike Harrison. Should you wish a copy of his notes let me have your email and I shall send them on.

Stevengcsmith@aol.com



A poster for a 'Drop-in Café' event. The background is a close-up of coffee beans. At the top, there is a small image of a cup of coffee. The text is centered and reads: 'Drop-in Café', '9.30-11am', '25th July, 22nd August, & 26th September'. Below this, there is a small white box with the text 'Hele Lane Chapel Black Dog' and a small illustration of a chapel. To the right of the white box, there is a small orange box with the text 'Hot drinks, cake, childrens craft and toys.' and 'No charge but donations welcome.'

Drop-in Café
9.30-11am
25th July, 22nd August, &
26th September

Hele Lane Chapel
Black Dog

Hot drinks,
cake, childrens
craft and toys.

No charge but
donations
welcome.



A poster for Harris Motors. The background is yellow. At the top, the text reads 'MOT Testing' and 'Servicing & Repairs'. Below this, the text reads 'HARRIS MOTORS'. To the right of the text, there is a large blue wrench icon. Below the text, there is a small white box with the text 'CHAPEL HILL, NOMANSLAND TIVERTON, DEVON, EX16 8NN'. Below the white box, there is a small orange box with the text 'Telephone 01884 860127' and 'crossman1990@yahoo.co.uk'.

MOT Testing
Servicing & Repairs

HARRIS MOTORS

CHAPEL HILL, NOMANSLAND
TIVERTON, DEVON, EX16 8NN

Telephone 01884 860127
crossman1990@yahoo.co.uk

WITHERIDGE WARRIORS YFC

Witheridge Warriors is a brand-new youth football club providing coaching and teams for boys and girls from the ages of 5 (year 1) through to age 10 (year 6). We aim to provide a welcoming, inclusive and safe environment in which children can flourish both on and off the pitch. Located in the heart of Witheridge, and affiliated with Witheridge AFC, all our coaches are fully DBS checked, first aid, safeguarding trained and hold FA level 1 coaching badge which allows us to provide structured group sessions tailored to the individual needs of our players. We provide a clearly established pathway from children's age group football all the way through to men's football. As a club we encourage an ethic of teamwork and camaraderie through our words and actions and provide an environment that allows the children to grow and develop not only their footballing ability but also some important life skills. We cater to all abilities and aim to provide additional coaching for goalkeepers as well as separate age group sessions. We pride ourselves on being a friendly, family-oriented club with our members forming strong lifelong bonds. If you are interested in bringing your child along, or you'd like more information on what we offer, please reach out to us at

Witheridgewarriorsyfc@gmail.com



(Continued on next page)

First 2 weeks free, then an annual sign up fee of £30, you will receive a free training kit on your first sign up (t-shirt, shorts and socks), a weekly £2 training fee and when games are played a £2 match fee. Training is on Thursdays 6:00pm - 7:00pm, every week excluding 2 weeks over the Christmas period (and any cancelled sessions due to pitch preservation).

Current team contacts:

U7's Tommy Butcher 07969485366

U10's Michael Woolacott 07908204243


Safeguarding officer Phoenix Griffith 07471016820

Enquiries witheridgewarriorsyfc@gmail.com

Links:

Sign up (inc training kit sizes). <https://forms.gle/7DZP7cZvzG2V75rt9>

Facebook <https://www.facebook.com/profile.php?id=61560352928333>



PCB CONSTRUCTION

- Decorative walling
- General building
- Steel & timber buildings
- Concreting
- Groundworks
- Landscaping
- Pavlos

Tel: 01884 861697
Mob: 07728492327
Email: Pcbcons@gmail.com
Web: pcbconstruction.co.uk

Witheridge Sports Club



A welcoming community run members sports and social club. We support Witheridge AFC and other sports clubs in the area, as well as regularly holding music and games events for all ages.



Our regular opening hours

Mon	5 - 8pm
Tues	Variable
Weds	7 - 11pm Quiz nights
Thurs	6 - 11pm
Fri	5 - 11pm
Sat	2 - 11pm
Sun	4 - 9.30pm

The Club is a Members Only establishment. Membership is open to all.

Details can be found on our facebook page, by contacting the club at

WitheridgeSportsClub@gmail.com
or just pop in and see us!



Change of CAREER?

Change someone's LIFE!

Join Our Caring Team at The Firs

Are you passionate about making a difference in people's lives? We have an exciting opportunity for caring individuals to become part of our team at The Firs.

Imagine working in an elegant period-style building that holds a rich history as the former doctor's manor house from the early 1900s. Our home is surrounded by gardens, providing seating spots and a close-to-nature experience. You'll find vegetable plots and a pond with a variety of fish, creating a soothing environment that residents are encouraged to engage with. Our skilled gardener welcomes their input and gardening insights, fostering a sense of community.

Join our dedicated care team, offering personalised and compassionate care that revolves around each individual's unique needs. We take pride in providing flexibility and choices that cater to the day-to-day lives of our residents.

Residents' well-being is paramount at The Firs. We've appointed a dedicated Well-Being Coordinator who curates a comprehensive 7-day activities schedule. This includes a range of engaging group events, one-on-one activities, and even the planning of major events like our annual summer fete.



My mother was taken into hospital last week. I was walking out of the cubicle when a nurse asked in which care home my mother was a resident. I said The Firs and the nurse said to me "I am not surprised it's The Firs as you can see that your mother is so well cared for, her skin is soft and she is clean and well kept." Christine.

If you think you can make a difference to our residents at The Firs and change their lives and yours for the better, apply online here: www.southwestcarehomes.co.uk/apply



Competitive salary, benefits, and a friendly working environment.



South West Care Homes

WHERE QUALITY COMES FIRST

The Firs, 27 Fore Street, Witheridge, EX16 8AH

1st Witheridge Brownies and Guides



Brownies and Guides have had a busy term, they have been working hard on badge work and have had a presentation evening when they all had their badges presented and several girls said their promise. They also took part in the parade for the St John's Fayre. We ended the term with a treasure hunt and have had several nights when we can go outside. The Guides are off to camp next weekend and are joining with 3rd Tiverton Guides.





Witheridge.**Online**

A modern website
By local people
For local people

Proudly supported by
The Firs

Local.**News**
Special.**Offers**
Upcoming.**Events**
Business.**Listings**
Clubs.**Charities**



South West Care Homes

WHERE QUALITY COMES FIRST

District Councillor Update – July 2025

What an incredible summer it has been so far! There have been some wonderful community events throughout the ward, including the St John Fayre in Witheridge. A huge well done and thank you to those who make these important local events happen!

Update on Affordable/Social Homes at Benson Grange, Witheridge

More social and affordable rent houses have been released, with the majority going to those with a local need. If you've been unsuccessful in previous bidding rounds, do keep trying—there are likely more properties than local demand in most categories, the exception to this may be one beds where there is a high demand for limited properties. Ensure your application details are correct, as errors may have led to missed opportunities. Once Witheridge needs are met, applications will open to neighbouring parishes and then to North Devon, so please spread the word.

Local Grants

L&G, which has taken ownership of the new development, is offering £15.5K in community grants. Details are on my Facebook page. This is in addition to the £15.5K awarded to local groups at the end of last year from Allison Homes.

A New County Councillor

County council elections took place on the 1st of May. As your District Councillor, this did not impact me, I remain your District Councillor until 2027.

County Councillor Jeremy now takes his well-earned retirement after 25 years of serving his community. Thank you, Jeremy, for representing your community in a challenging and often thankless position. Your new County Councillor is Richard Hopley. You can contact Richard at richard.hopley@devon.gov.uk. He is your contact for issues relating to the County Council, including roads and transport, social care, and education, to name just a few key areas.

.(continued on next page)

Land at Cannington Road and Community Orchard Project

In May, a public meeting was held by Parish Councillor Woody Fox to form the initial group interested in a potential community orchard project. Amenity land at Cannington Road was on the market, and with Section 106 open space funding available for such a project, plans were quickly made to look at purchasing the land.

Unfortunately, despite positive conversations, the owner chose to sell the land to an unknown party. Despite this setback, the community orchard project has new shoots of hope. I am in discussions with North Devon Council about the use of land adjoining the new public open space at Willow Rise.

Issues Relating to the New Development

Many of you have contacted me about issues relating to the footpaths resulting from the new development. Concerns included excess water and drainage issues, the length of the proposed closures, and the possibility of re-routing.

I have been liaising closely with the developer to relay concerns and bring improvements where possible. This has included the re-routing of one section.

I have also received concerning reports of flooding and severe drainage issues. There is an ongoing Council investigation to look further into these issues.

Local Government Reform

A public consultation is taking place to hear your thoughts on the proposals to merge District Councils and the County Council, creating a unitary authority.

I am deeply concerned that this will impact the services we have and reduce the voice of local communities, with fewer local representatives. More info is available on my Facebook page. Do feedback to the consultation.

Buses

Some improvements have been seen, however there have been recent issues, including connection problems in South Molton. Do use the post on Facebook to log any issues—it is vital we have a record. And do pass on your concerns to County Councillor Richard.

Section 106 Projects

I'm pleased to share that applications are now being submitted for the Section 106 community fund, which is money available from the development.

Funds will be awarded for updates to the village hall, to improve and preserve the facilities for the coming years.

The Sports Field Committee working group is developing a project to improve facilities. The Parish Council is investigating the feasibility of a state-of-the-art skatepark. An update and refurbishment of the existing pump trail is also anticipated.

Here When You Need Me!

Like and follow me on Facebook to stay up to date. You can contact me via Facebook Messenger, email me at Peter.jones@northdevon.gov.uk, or call/WhatsApp me at 07708 187 305.

Mel's Barber Shop

APPOINTMENTS ONLY

Call Mel to book: 07716 942005

Open: Tuesday, Thursday and Saturday
Haircuts for Men & Boys

Old Market Field Ind. Est.
Shop adjoining Leach Brothers

**WITHERIDGE
SELF STORAGE
SECURE CCTV**

**10' X 8' CONTAINERS
20' X 8' CONTAINERS
OTHER OPTIONS
ALSO AVAILABLE**

7 DAY ACCESS

01884 860194 07970 771718



THE SHIFTERS

Spirebourne Limited

Liquid Waste Disposal and Drainage Co.

FREEPHONE 08000 855 185

spirebourne@hotmail.co.uk

www.spirebourne.co.uk

EMERGENCY CALL OUTS

Septic Tank/ Cess Pool Emptying – Any Size

Grease Traps

Drain Blockage Clearance

Various Commercial Liquid Waste Disposal

Servicing

CCTV Drainage Surveys

Pump Repairs & Renewals

Installation of Septic Tanks & Sewage Treatment Works

Mantair Units

RICHARD GRANT MEMORIALS

"Your local independent Mason"

FREEPHONE

0800 146887

FOR YOUR FREE BROCHURE



2-4 WESTEXE NORTH, TIVERTON,

DEVON, EX16 5LX

TELEPHONE/FAX:

(01884) 255737

WWW.FINEMEMORIALS.CO.UK

COSWAY SOFT FURNISHINGS

Handmade Curtains, Roman Blinds
& Accessories

Design Service Available

Measuring Service

Highly Experienced Maker

Curtain Alterations Undertaken

Friendly & Approachable

Contact Sarah on 07701 062902

www.coswaysoftfurnishings.co.uk

Appleyard's

CHIMNEY SWEEPING & SERVICES

REGISTERED MEMBER INSTITUTE of CHIMNEY SWEEPS

FRIENDLY, CLEAN & SAFE SERVICE

PUBLIC LIABILITY INSURANCE £5M

INSURANCE CERTIFICATES ISSUED WITH EVERY SWEEP

Chimney Sweeping

Wood-burning Stoves

Multi-fuel Stoves

Open Fires

Agas/Rayburn

Gas & Oil Flues



REGISTERED MEMBER

www.localAuthorityChimneySweeping.co.uk

OTHER SERVICES INCLUDE

Removal of bird nests

Resealing of appliance components

Replacement rope seals, fire cement seals and fire bricks

01884 829464

07868 589525

www.appleyardschimney.co.uk



Alan Thomas Painter & Decorator



Interior/Exterior

Domestic & Commercial

13 Butts Close, Witheridge

EX16 8AJ

Tel No 01884 861092

Mobile 07713545772

Email: alanthomas.decorator@yahoo.co.uk

FOUR SEASONS

PROFESSIONAL TREE SERVICES

All aspects of tree surgery
Stump Removal
Crown Lifting and Crown Reduction
Hedge Cutting Grass Cutting
Turfing
All types of fencing

Grounds and Garden Maintenance
Wood Chip, Seasoned Logs
NPTC Qualified to British Standard 3998
Private and Commercial Customers
Fully Insured Free Quotations

info@fourseasons-treeservices.com
www.fourseasons-treeservices.com

Oliver Vernon Bycott Farm, Halberton,
Tiverton, Devon, EX16 7AU

01884 820839 07766 168162

Aerial Communications

TV & FM Aerials

Satellite Systems

Extension Points

CCTV Systems

WIFI Systems

No Call Out Charge

EST.

32yrs

John

01884 860701

WORLINGTON PHOTOGRAPHIC GROUP

We are a friendly group of photographers of all abilities meeting monthly at Worlington Parish Hall, on the 3rd Tuesday of each month at 7.30pm .

We have a yearly programme with regular trips out and also hold meetings in the Parish Hall to take indoor photographs with a theme, such as still life or portrait.

Contact: Terry Brown – (01884) 861268



Tricky2Cut

Mobile Sawmill Services

**Have your own trees sawn into useful timber at
your site.**

Planking, Sidings, beams, posts, rails etc.

Contact Richard (Tricky) for further information
07811 408157

Facebook page: Tricky2Cut

Website: www.tricky2cut.co.uk

Email: info@tricky2cut.co.uk

Serving Witheridge and surrounding area
Fully insured for sawmilling and chainsaw work.
(felling small/medium trees and logging work also
undertaken)

KP Interiors, East Burrow Farm, East Worlington

Bespoke, handmade curtains, blinds, box seating and all soft furnishings for your home. With 30 years experience in the Interiors industry, I can create your own finishing touches, whether it a new build or period property. I can work with your fabric, help you source fabrics online or I stock a small range of plain fabrics.



A complete handmade Roman Blind in one of my plain fabrics, fully lined (blackout if needed) supplied with a top quality childsafe headrail will cost as little as £150.

For larger projects my fitter can fit all your tracks and poles too!!

For any enquiries and no obligation help: call **07510317525**
email katherine971@btinternet.com



**Quality hardwood logs
cut to order and kindling.
All aspects of low impact
forestry.**

**Call Josh on 01363 83908
or 07792 906258**

Devon Open Studio – Visit local Artist Jenny Nash at her studio in September

Jenny Nash lives in Witheridge and paints seascapes and landscapes, inspired by the coastlines of Devon and Somerset, local farmland and the Exmoor and Dartmoor national parks.

Jenny sketches, draws and photographs whilst out walking to provide a reference for larger abstract works in acrylic or oil with pencil or ink markings.

Painting large seascapes that capture the sense of movement and power of the sea and smaller seascapes or landscapes reflecting the mood created by the quickly changing skies, Jenny says

“The sea, in particular, makes me feel before I really see; I try to capture my emotions in my paintings and use the view to provide structure and composition.”

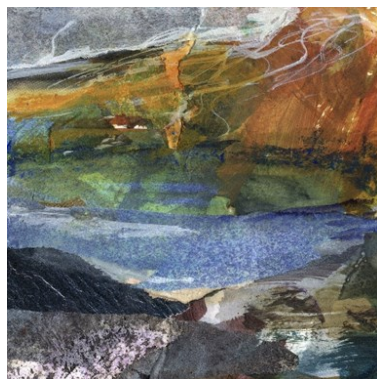
Recently Jenny has been working in collage and watercolours which has introduced a new energetic look and feel and an increased colour palette.

After successfully exhibiting in several Devon exhibitions Jenny is opening her studio, near Witheridge for the first time during **Devon Open Studios from September 6 to 21**. Visitors can meet Jenny, see her works and the farm and gardens that inspire some of her paintings. There should also be tea and cake!

For more information about Jenny or Devon Open Studios please visit jennynash.co.uk



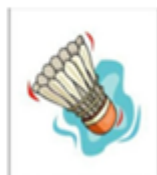
Art by Jenny Nash



Badminton

The Badminton club meets on Fridays at 8pm and the cost is £3.50 per session.

Anyone interested in coming along should contact Linda Williams 07966131522



Short mat bowls

We meet in the Parish Hall on Thursdays at 2pm. Club woods are available for those who have not played before. The first three afternoons are free and tuition will be given.

Green fee is £3.50 per session there after

Short mat bowls is open to residents of Witheridge and surrounding villages. Children over 10 and under 16 must be accompanied by an adult at all times. Greg Henderson



Photo - Robin Thomason

Table tennis

Come and join our small friendly group for adults aged 16 or over. All equipment is supplied and we offer tea and coffee too. Come along and pass an enjoyable hour. All levels of ability, from beginners to Olympic contenders, are most welcome.

Friday 11.00am - 12.00 in Parish Hall

Greg Henderson



Need to rejuvenate old metal?

We provide a variety of services ranging from powder coating to hot zinc spray and shot blasting. We keep a range of about 100 colours in stock, and most are exterior polyesters, which provide excellent durability and colour retention on gates, railings and garden furniture.



Telephone 01884 34506

Opening Hours: Monday to Thursday 8 am to 5 pm or Friday 7 am to 1 pm

Email: coatingsupplies@aol.com

www.industrialcoatingsupplies.co.uk

Units 1 + 2 Simmons Place, Kingsmill Industrial Estate Cullumpton EX15 1BH

Try a different approach to pain ... try Bowen Therapy

Sarah Swadling cert ECBS

07840 596501

Release, Rebalance, Revitalise – in Thelbridge

Back and neck pain • Frozen Shoulder • joint pain • stress
Menopausal symptoms • headaches • chronic fatigue • RSI
and many more... suitable for all ages and pregnant women

Bowen Therapy is a gentle hands on approach using precise
moves over muscles and soft tissue, which release tension and
prompt the body to begin repairing itself.

www.swadlingbowen.co.uk



Steve Rolfe

Oil Fired Heating Services

Over 20 years experience of providing a quality service

* Service and maintenance of boilers, Aga's and Rayburns
from £58.00 + VAT

* Installation of boilers and
Central Heating systems
* Oil tank replacements

* System Power Flushing
* System updates and sealed
system conversions

Tel: 01398 351471

Mob: 07894080143



Ray Westcott & Sons

Traditional
West Country Thatchers
Over 35 years experience
No Job too small
FREE ESTIMATES

angelawestcott123@outlook.com

T:01884 861577

M:07990 951809

Or:07788 293580

T:01884861577



Andrew Prince Electrics Electrical Contractor

Tel: 01884 861648

Mob: 07714 618390

andrewprinceelectrics@hotmail.co.uk

Domestic, Industrial, Commercial,
Agricultural
Test and inspection



The PC Geek your computer...
not working got a virus
Collecting dust in the corner
call Andy Carnegie

£55 first hour
then

£15.00 every 30min



Tel: 07903 566861

Email: tpcgeek@hotmail.co.uk



What's Happening		In the Village ?	
Parish Hall Chair		Clare Spicer	860135
Parish Hall Bookings	(meetings are free)	Steven Smith	861037
Allotment Society	David Williams	07811	979488
Art Group	Parish Hall- Wed 7.30pm	Eileen Curtis	860564
Badminton	Parish Hall Fri 7.30pm Linda	Williams 0796613	1522
Brownies and Guides	Witheridge School	Carole Chapple	855329
Charity Bingo	Thelbridge Parish Hall-alt Wed 7.30	Marion Crane	860530
Bell Ringers	Belfry Thursday 7.30 pm Ken	Ramsbotham	861108
Dog Training	Parish Hall Mon 6pm Jackie	McDevitt 01769	550155
Film Club		Margie Cosker	861695
Gardening Club	Parish Hall Last Wed 7pm	Jill Horwood	861323
Knights of Witheridge	Chairman	Ian Trench	860770
Ladies Group	Parish Hall 2nd Tues 2pm Coral	Simmonds 0775	9845052
Methodist Church	Sunday 10.30am Ruth Towers	0798	0104347
Monday Club	Rest-a-while Alt Mon 2pm	Val Dickinson	860709
Rest-a-while Mon-Sat 10-	12 Bingo alt Fri, Bring + Buy last Fri	Val Dickinson	860709
Short mat bowls	Parish Hall Tues 6.30pm. Thur 2pm	Greg Henderson	860819
Table Tennis	Parish Hall Fri 11-12	Greg Henderson	860819
Tennis Club	www.witheridgetennisclub.com	Sarah Vertigan	07939 241025
Taekwondo	Parish Hall Thurs 6-7pm Kevin	Raven 07804	471165
Astronomical Society	Committee Room 3rd Thurs 7.30-9	Steven Smith	861037
Witheridge in Bloom	carol.northam1@pobroadband.co.uk		860817
Witheridge Golf Society	Ken	Ramsbotham	861108
Witheridge Parish Church	Sunday 9.30am	Rev Adrian Wells	861383
Witheridge Primary School	& Preschool Head of School	Miss Ratcliffe	860518
Witheridge parent and Toddler group	Witheridge school Wed 1.45-3.30pm	Rebecca +Nick	0787512706 4
	Fridays 9-10.30am	Robinson	
Witheridge Ploughing Association	Gill Gilbard gill@helebartonfarm.co.uk		
Witheridge Young Farmers	Emma Gilbard emma.gilbard@	markalengroup.com	
Witheridge Youth Club	Parish Hall 1st & 3rd Thurs 7-8.30pm	Andrea Court	860815
Witheridge Striders	Edward Fyson 07517 148284	Janet Ashelford	860234
Worlington Photographic Group	Worlington Parish Hall 3rd Tue 7.30	Terry Brown	861268



West Middlewick Farm Shop & The Hayloft teashop

Nomansland, Tiverton, Devon EX16 8NP



Fruit and Vegetables

Our own fresh Raw or Pasteurised milk

Beef, Pork, Lamb, Chicken and Duck

Free range eggs

Chilled products including cheese, yoghurts, fresh foods & award-winning scotch eggs

Crisp, snacks, bread and cakes

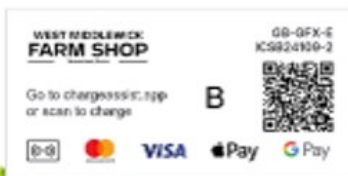
Ice creams & frozen bakery items

Local crafts, seasonal gifts and homeware

Ecover refills and cleaning products,

EV Car charger

Gifts and more...!



For opening hours check out our website westmiddlewick.co.uk or find us on Facebook and Instagram